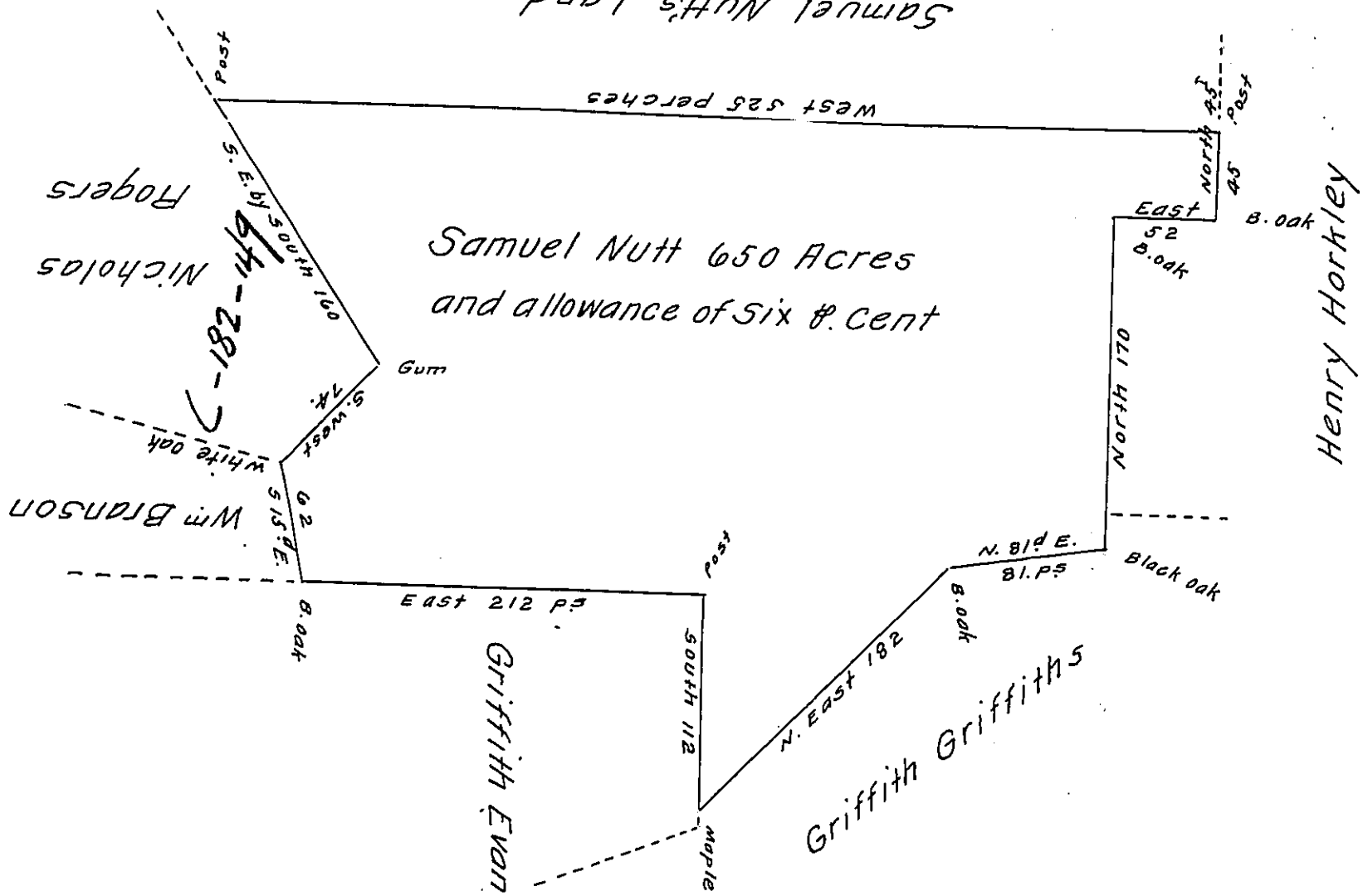


C154-228
SAMUEL NUTT'S LAND



In Pursuance of two Warrants from ye Comm^rs of Property, one for 400 acres dated 18th of 7^{br} 1717, The other for 800 acres dated the 2^d of 8^{br} 1718. Survey'd to Sam^l Nutt on the 27th May 1726, The above Described Tract of Land. Situate in Coventrey—in Chester County containing Six Hundred & fifty Acres & the allowance of Six & Cent.

Jn^o Taylor —

IN TESTIMONY that the above is a copy of the original remaining on file in the Department of Internal Affairs of Pennsylvania, made conformably to an Act of Assembly approved the 16th day of February, 1833, I have hereunto set my Hand and caused the Seal of said Department to be affixed at Harrisburg, this twenty eighth day of April 1910.

Henry Horkley
Secretary of Internal Affairs.